



New Sport Exhaust System for the Opel Corsa D OPC and GSI models

- Complete system fitted to catalytic filter (with EC homologation)
- Tube replacing front silencer also available (not licensed)
- Tube replacing front silencer also available (not licensed)
- Turbo Exit Tube available (not licensed)
- Power Increase by 7.5 kW and 12 Nm

Opel Corsa D OPC

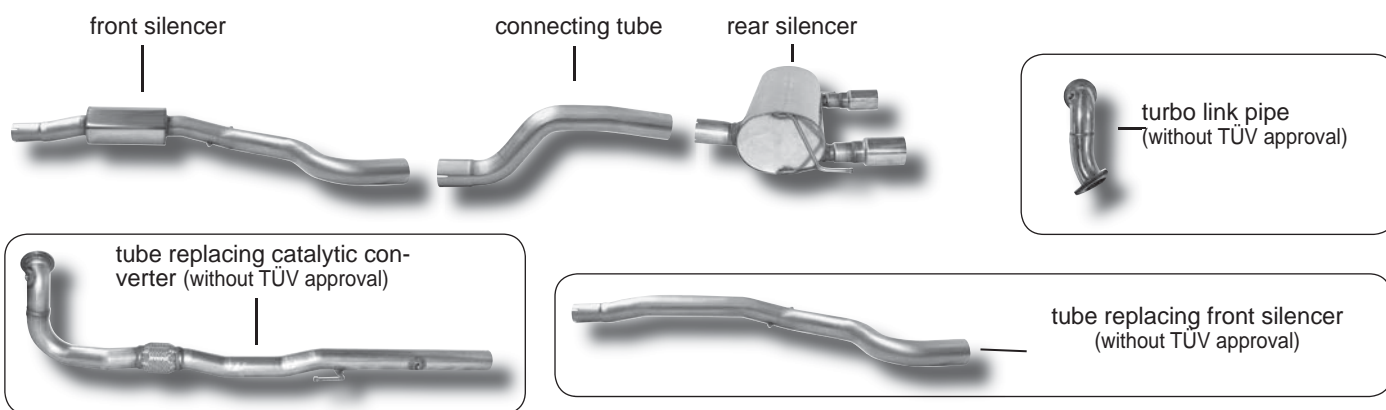


In time for the May holidays we are happy to present a newly developed product for a recently introduced Opel model. The turbo versions OPC and GSI of the fourth Corsa generation that are an ideal base for a sporting appearance with their lively design, can be prepared for the first summer tours with an equally dynamic sport exhaust system (with EC homologation). The new system will be added to our sporting compact range with immediate availability.

For the Opel Corsa OPC and GSI versions the complete system (Ø 70 mm fitted to catalytic filter) consists of a front silencer, a connecting tube and an end silencer.

The end silencer can also be mounted separately by using an adapter. In addition we are introducing a turbo link pipe (without TÜV approval) to replace the pre-catalytic filter as well as a tube replacing the front silencer (without TÜV approval) and a tube replacing the catalytic filter (without TÜV approval). The products without official license are for motor racing purposes.

Sport Exhaust System Ø 70 mm (fitted to catalytic filter)





BASTUCK Product Info

3 April 2008

Full bodied sound and clearly more output for the Opel Corsa D OPC

The system not only appeals through its individual and dynamic looks but also with the powerful, deep and sonorous sound so typical for BASTUCK products.

In addition the system gives the car an enormous power increase. After mounting the sport exhaust system the output of the Opel Corsa D OPC is enhanced by 7.5 kW, and the torque increase is 12 Nm.

(referring model 141 kW at 5850 rpm, initial gauging 157 kW / 285 Nm)



Opel Corsa D GSI



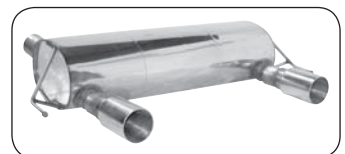
Oval
120 x 80 mm



Double Oval
120 x 80 mm



Single Central
70 x 60 mm (triangular form)



Double Race
Ø 90 mm

Four sporty tailpipe versions



Opel Corsa D OPC

In order to further enhance the looks of the Opel Corsa OPC, the top sports version of the Corsa model range, we have developed and produced two specific tailpipe versions: The "Single Central" version (single tailpipe, 70 x 60 mm, central exit) which has a triangular shape precisely fitted to the gap in the OPC rear skirting, and the "Double Race" version (single tailpipe, 1 x 90 mm, exit LR and RR) in a sporty racing look which can be fitted with an aluminium mesh wire which covers the gap in the rear skirt and gives the "Double Race" option a perfect finish of the car's rear.



Opel Corsa D GSI

For the Opel Corsa GSI there are also two tailpipe options available: The "Oval" version (single oval tailpipe 120 x 80 mm, exit LR) and the "Double "Oval" option (single oval tailpipe, 120 x 80 mm, exit LR and RR).





LEISTUNGS-DIAGNOSE

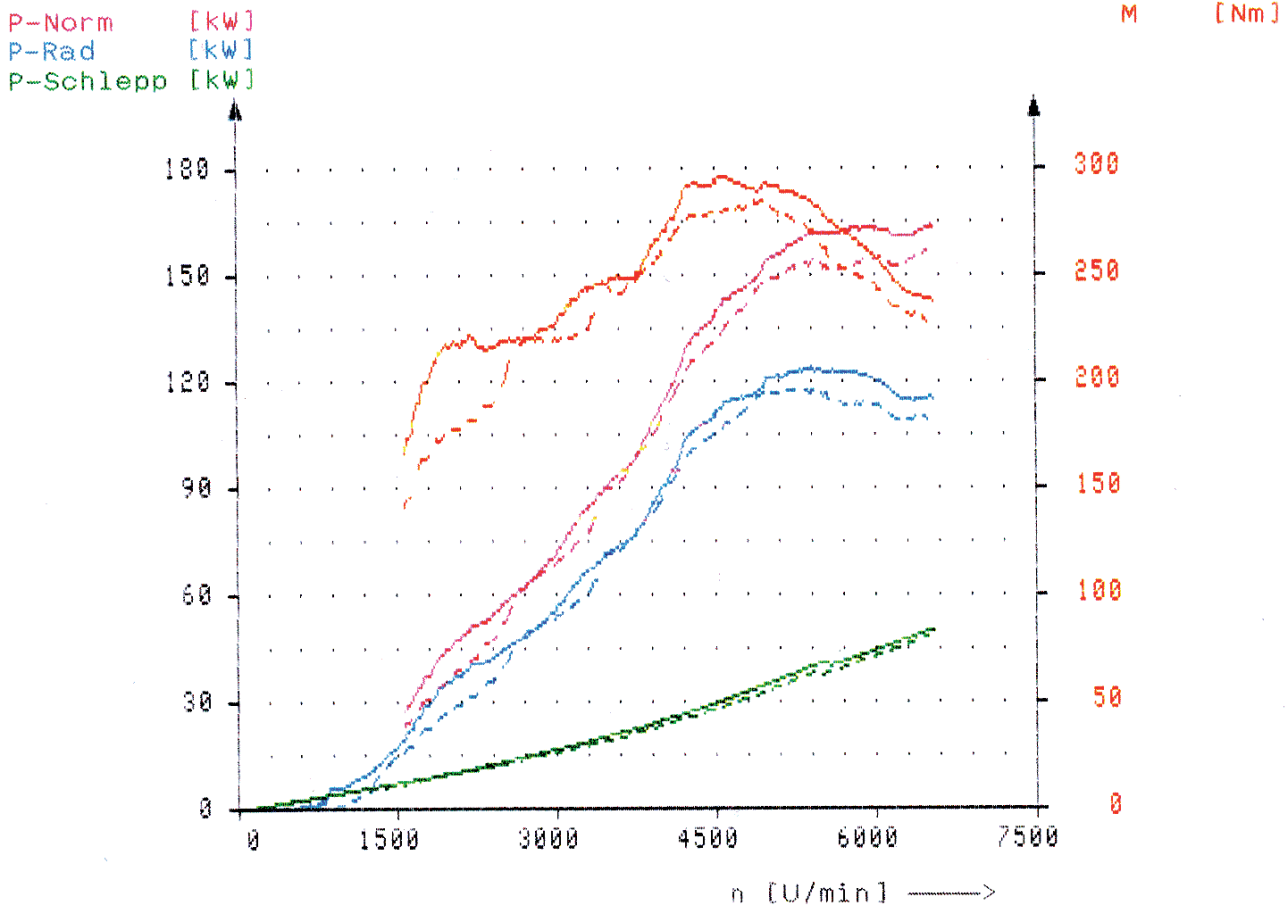
Bastuck & Co GmbH
 Heeresstrasse West
 66822 Lebach

KFZ-Typ : KW 141/5850
 Motor-Typ : Otto Motor
 Kennzeichen : Opel Corsa D OPC Sport
 Prüfer : Klos Patrik

Datum : 11.02.08

Uhrzeit : 08:36

Pogramm-Version V 1.40 Regler-Version V 1.10 Meßbox-Version V 1.05



LEISTUNGS-DATEN :

Norm-Leistung P-Norm : 164,5 kW (223,7 PS) nach DIN 70020
 Motorleistung P-Mot : 166,5 kW (226,4 PS)
 Radleistung P-Rad : 115,5 kW (157,0 PS)
 Schleppleistung P-Schlepp : 51,0 kW (69,3 PS)
 Maximale Leistung bei 208 km/h bzw. 6570 U/min

Drehmoment M : 297 Nm
 Maximales Drehmoment bei 146 km/h bzw. 4610 U/min

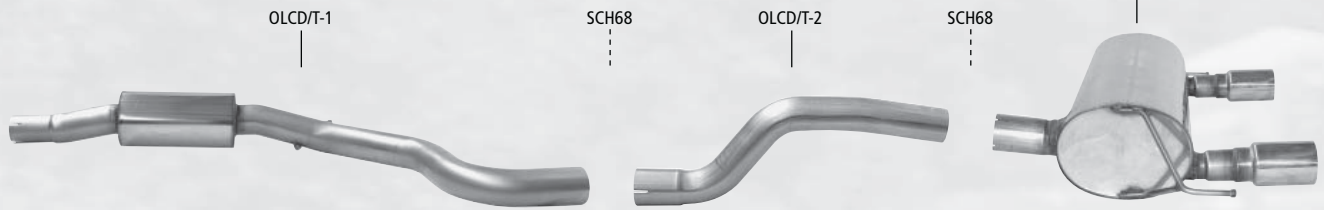
Maximale Geschwindigkeit : 208 km/h
 Maximale Drehzahl : 6570 U/min

Luftdruck : 1009 mbar Lufttemperatur : 10 °C
 Druck 1 : 0 mbar Öltemperatur : -- °C
 Druck 2 : 0 mbar Abgastemperatur : --- °C

**Komplettanlage (ab Kat)
mit 2 Endrohrvarianten**

**Ligne complète (après catalyseur)
en 2 types de sorties**

**Complete system (behind catalytic converter)
in 2 tailpipe variations**



**Turboabgangsrohr
(ohne TÜV)**

**Tuyau de liaison Turbo
(non homologué TÜV)**

**Turbo link pipe
(without TÜV approval)**

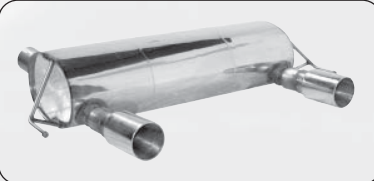


Single Central

**Kat-Ersatzrohr
(ohne TÜV)**

**Tuyau de remplacement pour
catalyseur (non homologué TÜV)**

**Tube replacing catalytic converter
(without TÜV approval)**

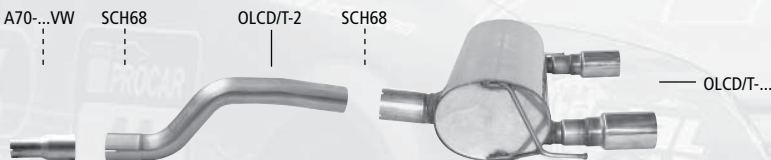


Double RACE
Ø 90 mm

**Endschalldämpfer plus
Verbindungsrohr und
Adapter (als Ersatz für
den Serienschalldämpfer)**

**Silencieux arrière plus tuyau
de liaison et adaptateur
(en remplacement du silencieux
arrière d'origine)**

**Rear silencer
plus link pipe and adaptor
(Replacing the original
rear silencer)**



Oval
mit Einsatz / avec insert / with insert
120 x 80 mm

**Ersatzrohr für
Vorschalldämpfer
(ohne TÜV)**

**Tuyau de remplacement
pour silencieux avant
(non homologué TÜV)**

**Tube replacing
front silencer
(without TÜV approval)**

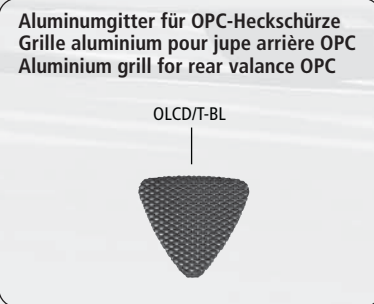


Double
mit Einsatz / avec insert / with insert
120 x 80 mm

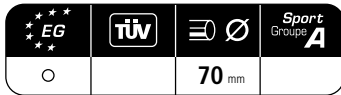
Befestigungsmaterial

Pièces de fixation

Fixing parts



**Aluminumgitter für OPC-Heckschürze
Grille aluminium pour jupe arrière OPC
Aluminium grill for rear valance OPC**



Corsa D OPC + GSI

Verwendung		Utilisation		Application	
Die Edelstahl-Auspuffanlage ist zum Anbau an folgende Fahrzeuge geeignet:		Les échappements inox peuvent se monter sur les véhicules suivants:		The stainless steel exhaust is suitable for the following cars:	
Typ Type Type		ABE-Nr./Gen.-Nr. N° série EEC-No		Verkaufsbezeichnung Type véhicule Car type	
Motortyp Type moteur Engine type	Hubraum (cm³) Cylindré (cm³) Capacity (cm³)	Nennleistung (KW/min) Puissance (KW/rmn) Max. power (KW/min)	Motortyp Type moteur Engine type	Hubraum (cm³) Cylindré (cm³) Capacity (cm³)	Nennleistung (KW/min) Puissance (KW/rmn) Max. power (KW/min)
S-D		e1*2001/116*0379*..		Opel Corsa D	
Z16LEL/Otto	1598	110/5000	Z16LER/Otto	1598	141/5850

Hinweis:
Beim Opel Corsa D OPC wird bei Montage der Komplettanlage kein Adapter benötigt!

Der Endschalldämpfer kann auch alleine verwendet werden. Zur Montage benötigt man neben dem Verbindungsrohr OLCD/T-2 noch zusätzlich den Adapter A70-...VW.

Remarque:
Pour monter la ligne complète sur Opel Corsa D OPC und adaptateur n'est pas nécessaire!

Le silencieux arrière peut être utilisé seul! Il est alors indispensable d'utiliser l'adaptateur A70-...VW en plus du tuyau de liaison OLCD/T-2.

Attention:
On Opel Corsa D OPC an adaptor is not required when mounting the complete exhaust system!

The rear silencer can be mounted on its own, but the adaptor A70-...VW is required together with the link pipe OLCD/T-2.

Artikel-Nr. N° Référence Article No	Bezeichnung	Description	Description
OLCD/T-DP	Turboabgangsrohr (ohne TÜV)	Tuyau de liaison Turbo (non homologué TÜV)	Turbo link pipe (without TÜV approval)
OLCD/T-KP	Kat-Ersatzrohr (ohne TÜV)	Tuyau de remplacement pour catalyseur (non homologué TÜV)	Tube replacing catalytic converter (without TÜV approval)
OLCD/T-1	Vorschalldämpfer	Silencieux avant	Front silencer
OLCD/T-1P	Ersatzrohr für Vorschalldämpfer (ohne TÜV)	Tuyau de remplacement pour silencieux avant (non homologué TÜV)	Tube replacing front silencer (without TÜV approval)
OLCD /T-2	Verbindungsrohr	Tuyau de liaison	Link pipe
A70-55.5VW A70-60.5VW	Adapter Verbindungsrohr auf Serie auf Ø 55.5 mm auf Ø 60.5 mm	Adaptateur tuyau de liaison sur série pour Ø 55.5 mm pour Ø 60.5 mm	Adaptor link pipe on original system to Ø 55.5 mm to Ø 60.5 mm

Single Central

OLCD/T-C	Endschalldämpfer mit Einfach-Endrohr 1x 70 x 60 mm (in Dreieck-Form), Ausgang Mitte Corsa D OPC	Silencieux arrière à sortie simple 1x 70 x 60 mm (forme triangulaire), sortie centrale Corsa D OPC	Rear silencer with single tailpipe 1x 70 x 60 mm (triangular form), central exit Corsa D OPC
----------	---	--	--

Double RACE

OLCD/T-Q90R	Endschalldämpfer mit Einfach-Endrohr 1x Ø 90 mm (im RACE-Look) LH+RH Corsa D OPC	Silencieux arrière à sortie simple 1x Ø 90 mm (au look RACE) LH+RH Corsa D OPC	Rear silencer with single tailpipe 1x Ø 90 mm (RACE-Look) LH+RH Corsa D OPC
-------------	--	--	---

Oval mit Einsatz / avec insert / with insert

OLCD/T-OVAL	Endschalldämpfer mit Einfach-Endrohr 1x Oval 120 x 80 mm LH Corsa D GSI	Silencieux arrière à sortie simple 1x Oval 120 x 80 mm LH Corsa D GSI	Rear silencer with single tailpipe 1x Oval 120 x 80 mm LH Corsa D GSI
-------------	---	---	---

Double mit Einsatz / avec insert / with insert

OLCD/T-QOVAL	Endschalldämpfer mit Einfach-Endrohr 1x Oval 120 x 80 mm LH+RH Corsa D GSI	Silencieux arrière à sortie simple 1x Oval 120 x 80 mm LH+RH Corsa D GSI	Rear silencer with single tailpipe 1x Oval 120 x 80 mm LH+RH Corsa D GSI
OLCD/T-BL	Aluminiumgitter zum Einsatz in die mittlere Ausparung der OPC-Heckschürze (nur bei Verwendung des Endschalldämpfers OLCD/T-90R erforderlich)	Grille en aluminium pour insérer dans l'ouverture centrale de la jupe arrière OPC (uniquement nécessaire pour montage du silencieux OLCD/T-90R)	Aluminium grill to insert into the central gap of the rear OPCvalance (only required when mounting the rear silencer OLCD/T-90R)
SCH68	Auspuffschele Edelstahl Ø 68-73 mm	Collier de montage inox Ø 68-73 mm	Stainless steel clamp Ø 68-73 mm